



SharpChart v

Enter Symbol or Name

Go



Charts & Tools

Articles

StockCharts TV

ChartSchool

Your Dashboard

Help



001 - Money & Markets

(E) Emerging Markets

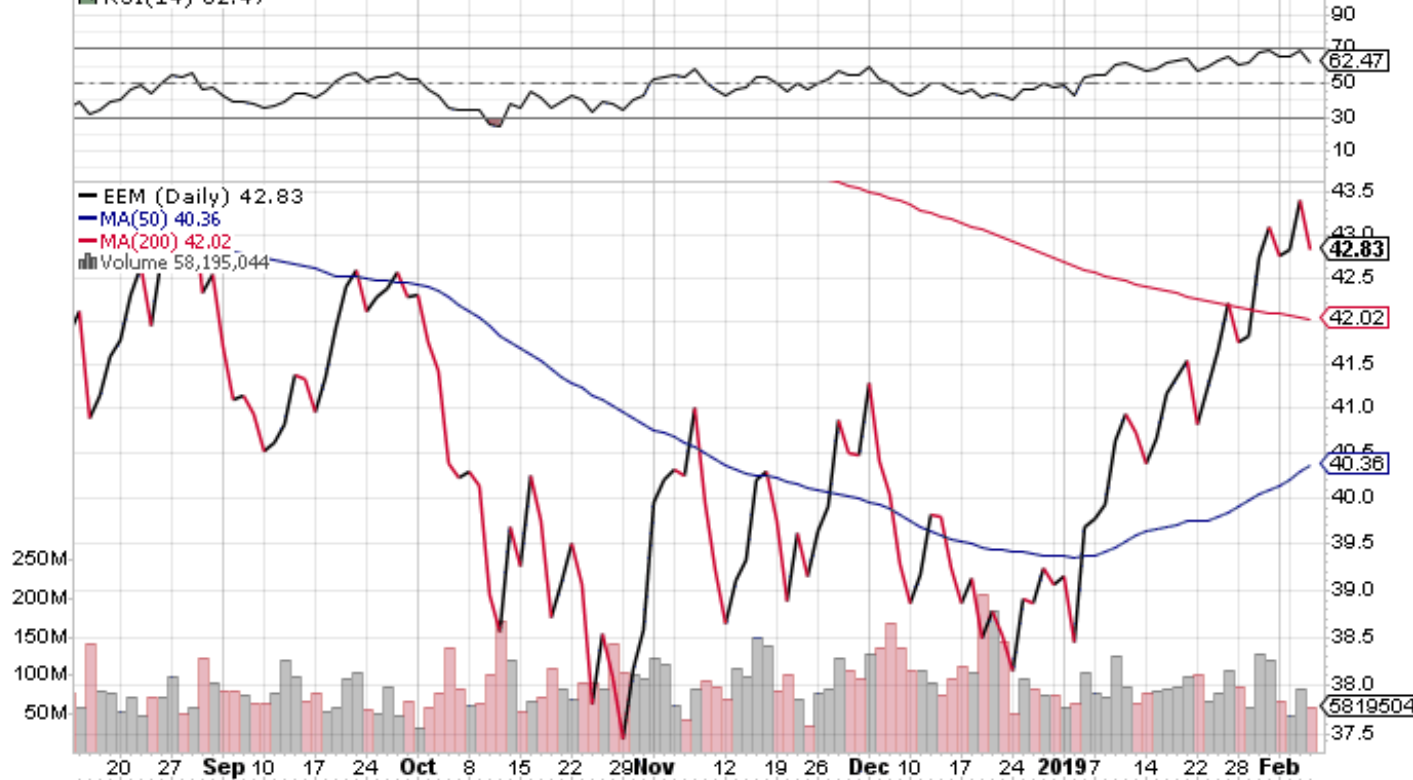
EEM iShares MSCI Emerging Markets ETF NYSE

© StockCharts.com

8-Feb-2019

Open 43.22 High 43.25 Low 42.74 Close 42.83 Volume 58.2M Chg -0.59 (-1.36%)

▲ RSI(14) 62.47

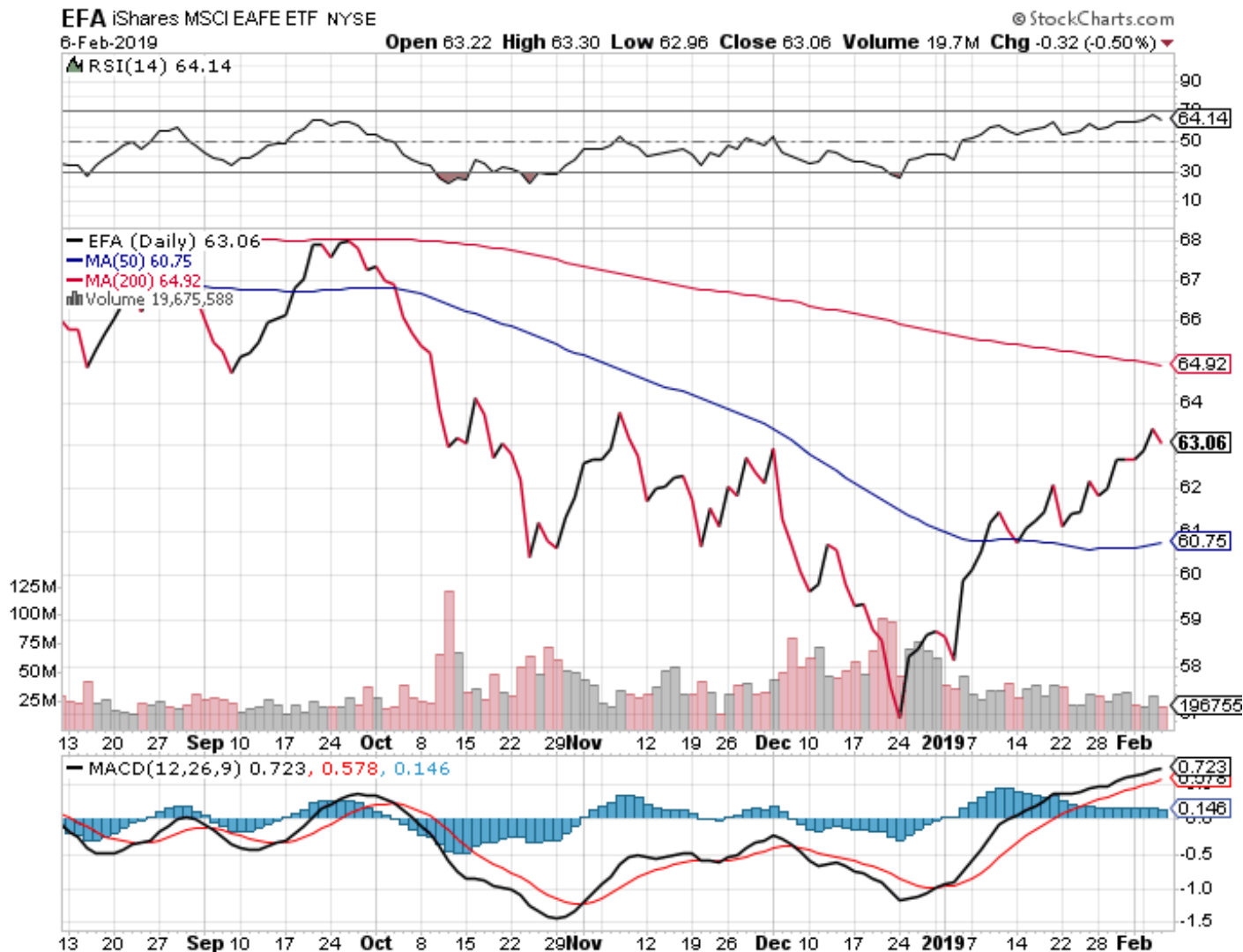


MACD(12,26,9) 0.839, 0.728, 0.111



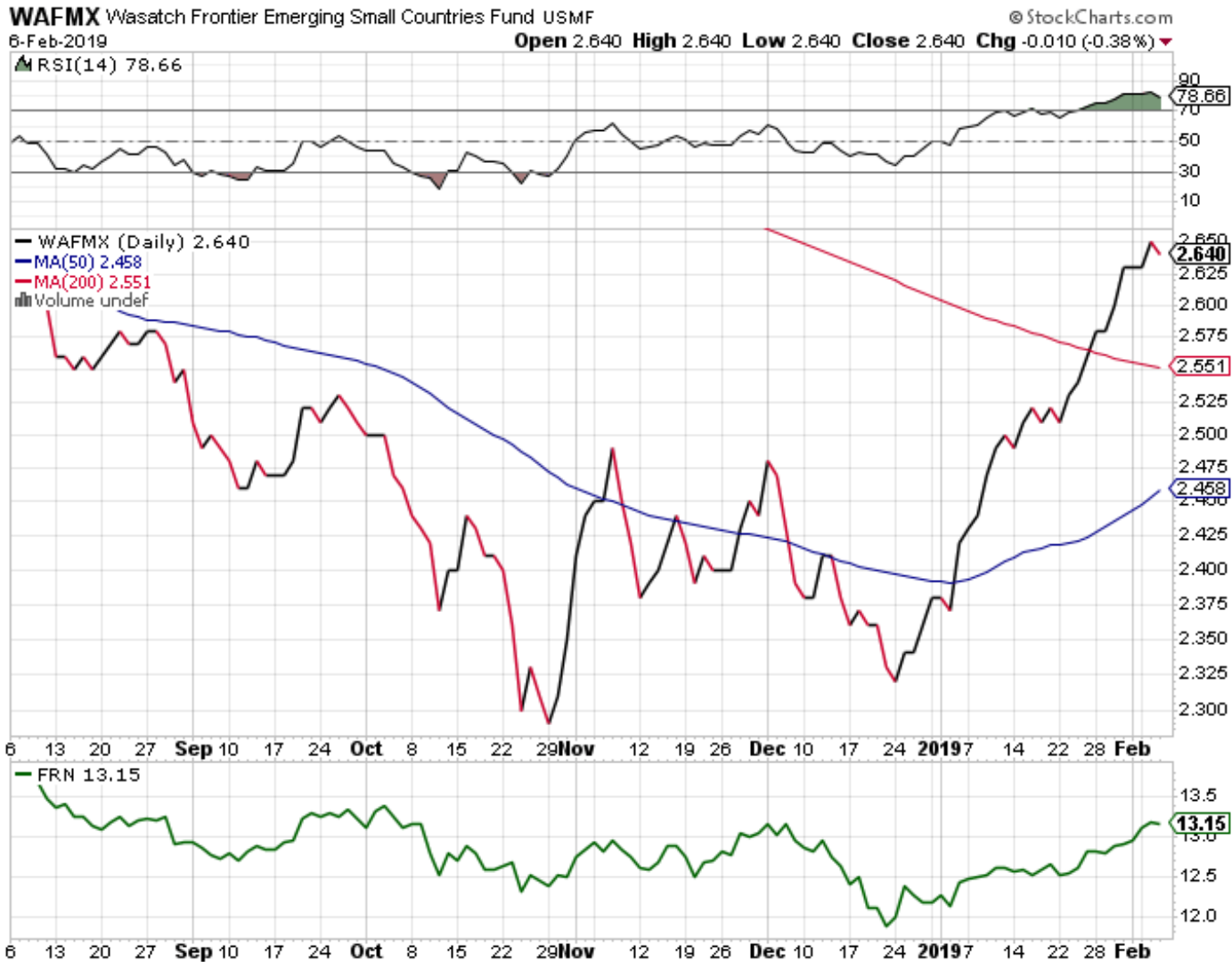
Equities

(E) EUROPE - ASIA - AUSTRALIA



Equities

(E) FRONTIER



Equities (+) FRN

(E) INDIA



(E) Equities

(E) INTERNATIONAL EQUITIES



Equities

(E) INTERNATIONAL EQUITIES (-) US



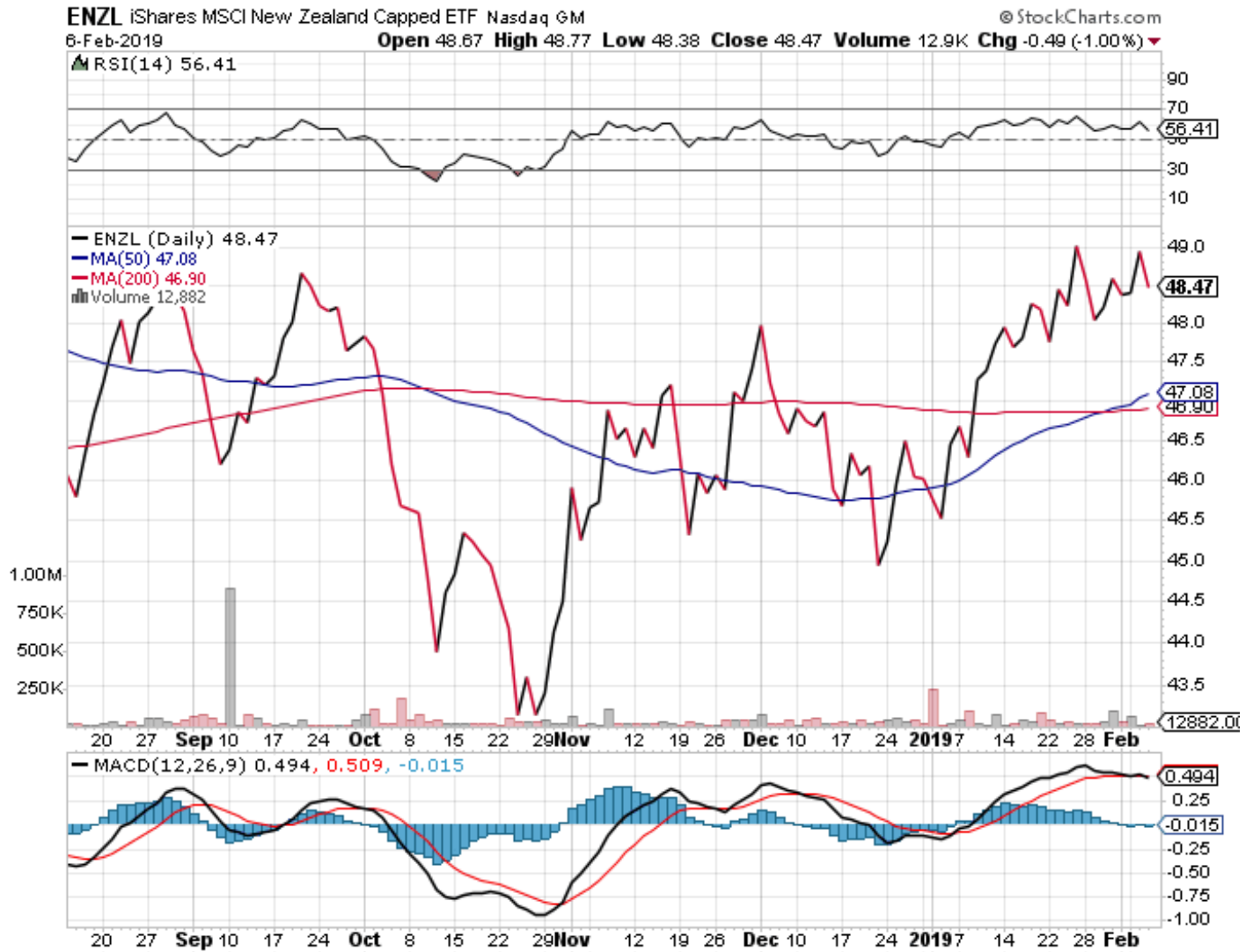
Equities

(E) iShares Russell 2000



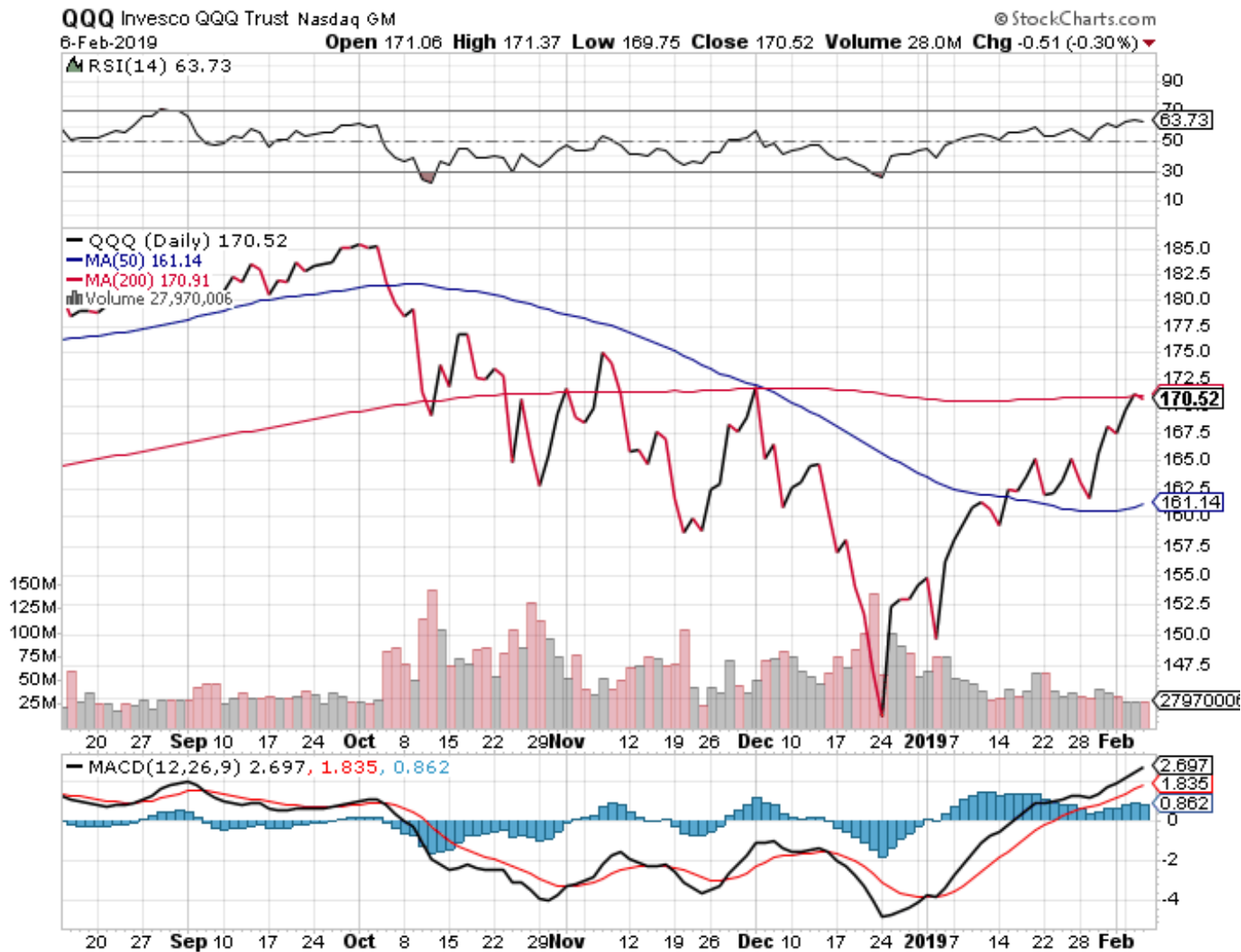
Equities

(E) New Zealand



Equities

(E) Power Shares



Equities

(E) Russia



Equities