



SharpChart v

Enter Symbol or Name

Go



Charts & Tools

Articles

StockCharts TV

ChartSchool

Your Dashboard

Help



001 - Money & Markets

(E) Emerging Markets

EEM iShares MSCI Emerging Markets ETF NYSE

© StockCharts.com

30-Jan-2019

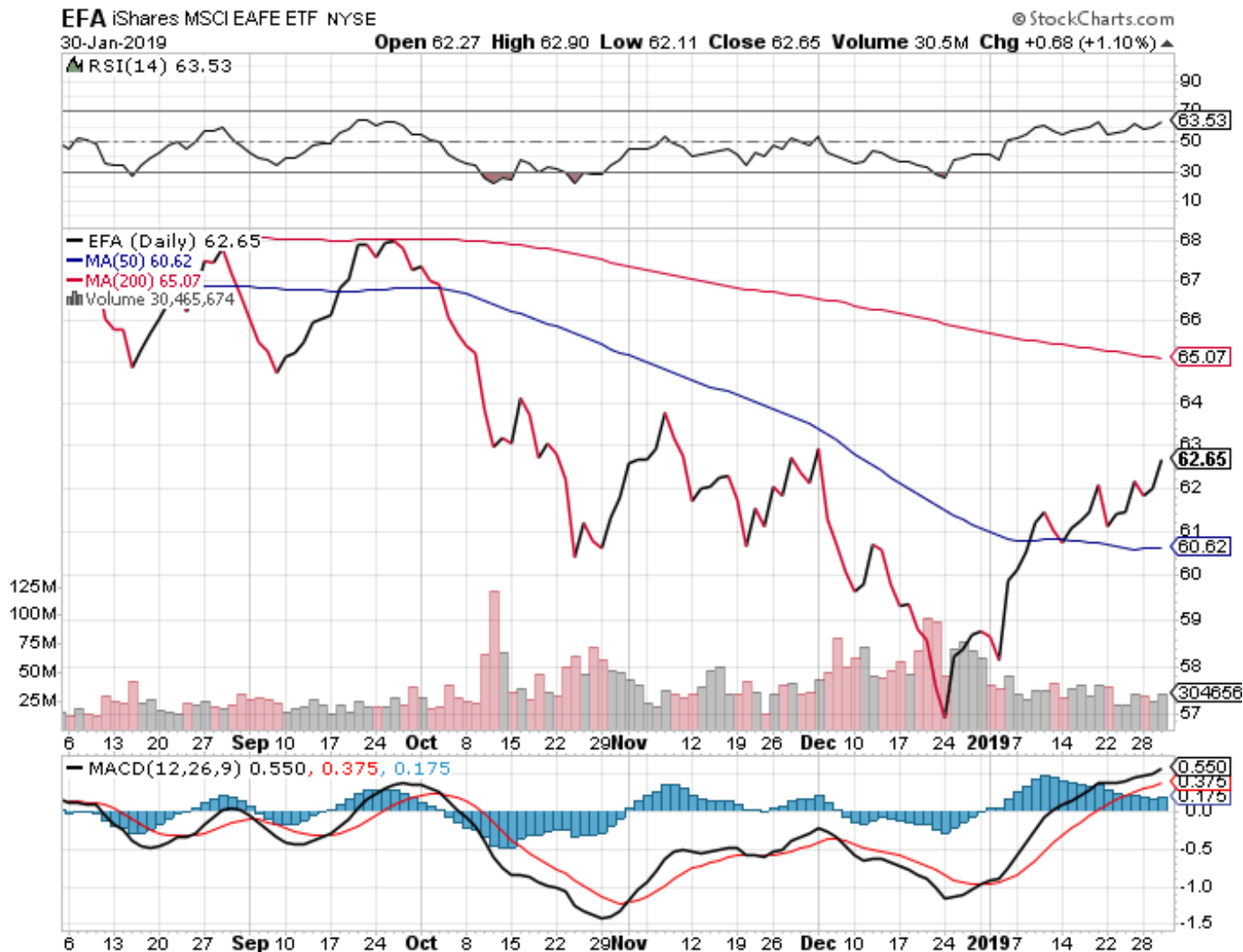
Open 42.08 High 42.83 Low 41.88 Close 42.74 Volume 127.8M Chg +0.91 (+2.18%)

▲ RSI(14) 67.51



Equities

(E) EUROPE - ASIA - AUSTRALIA



Equities

(E) FRONTIER



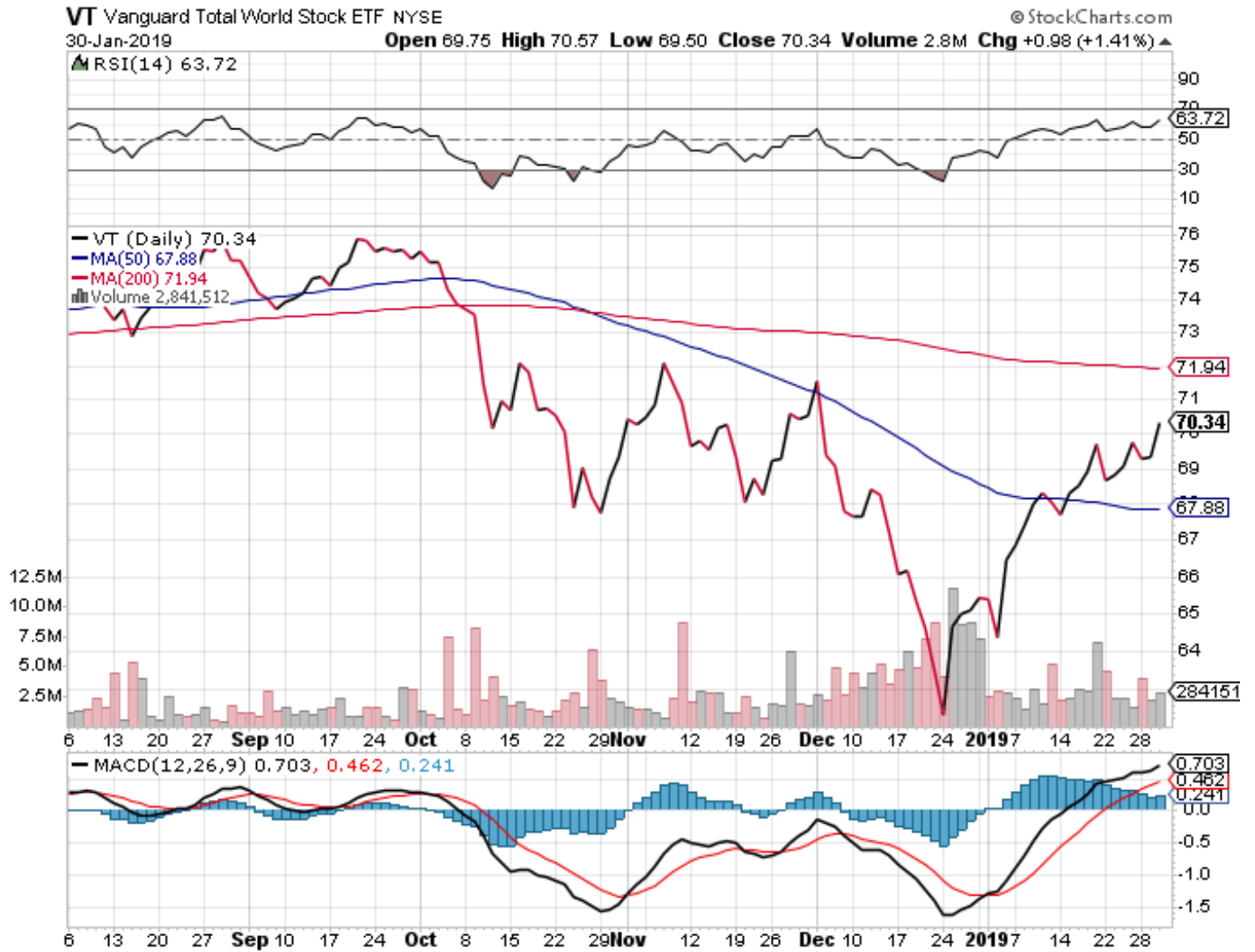
Equities (+) FRN

(E) INDIA



(E) Equities

(E) INTERNATIONAL EQUITIES



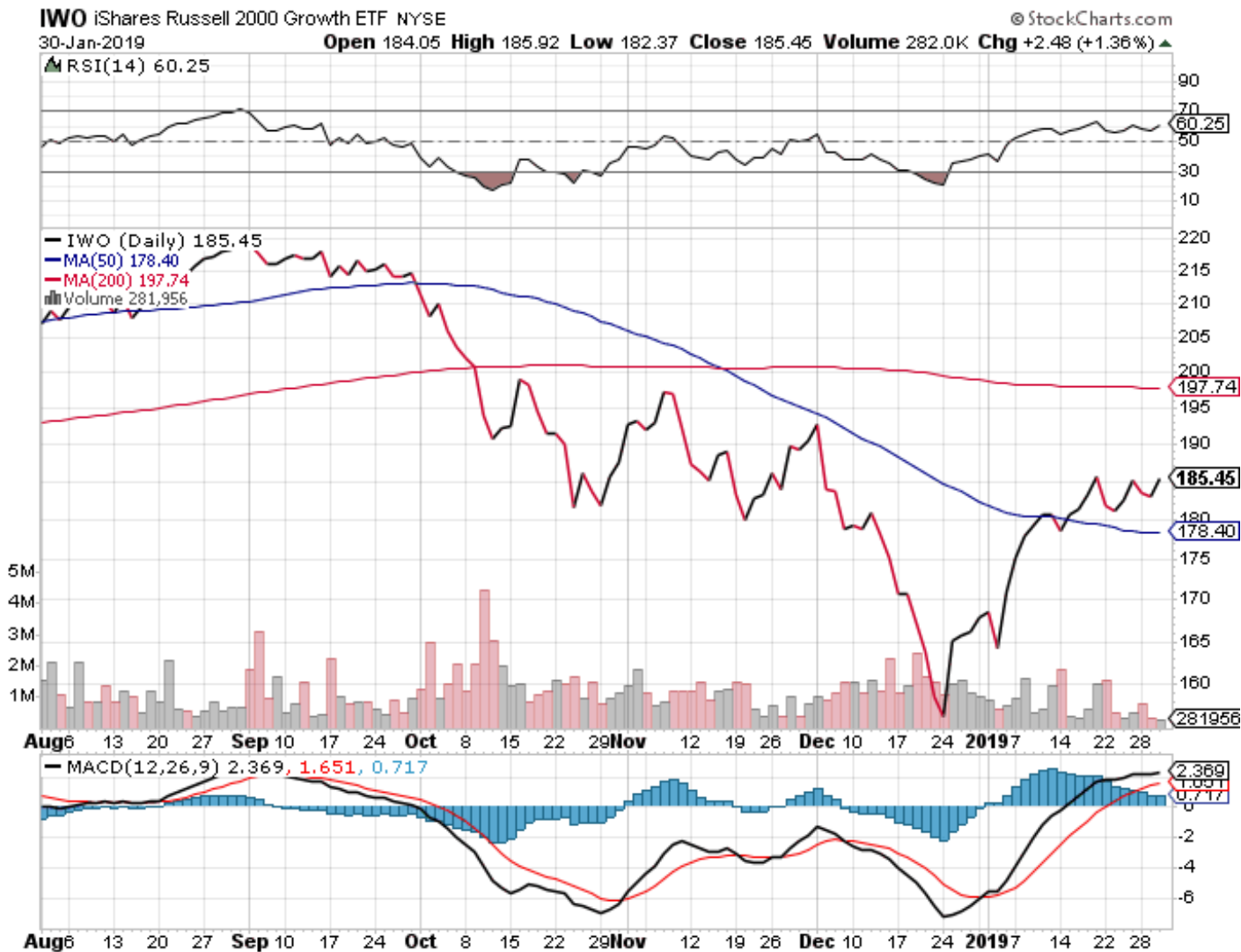
Equities

(E) INTERNATIONAL EQUITIES (-) US



Equities

(E) iShares Russell 2000



Equities

(E) New Zealand



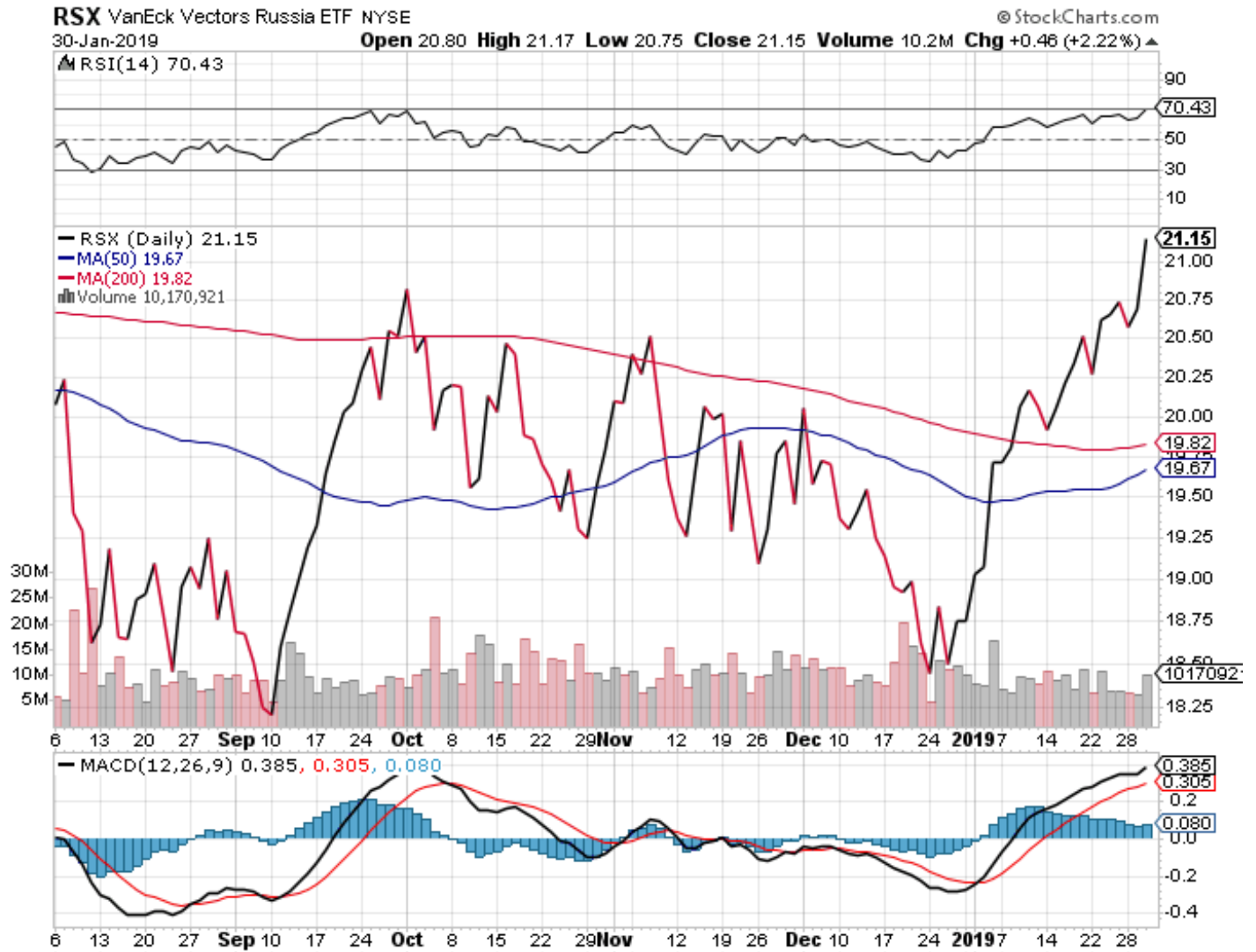
Equities

(E) Power Shares



Equities

(E) Russia



Equities