

(US) Robotics

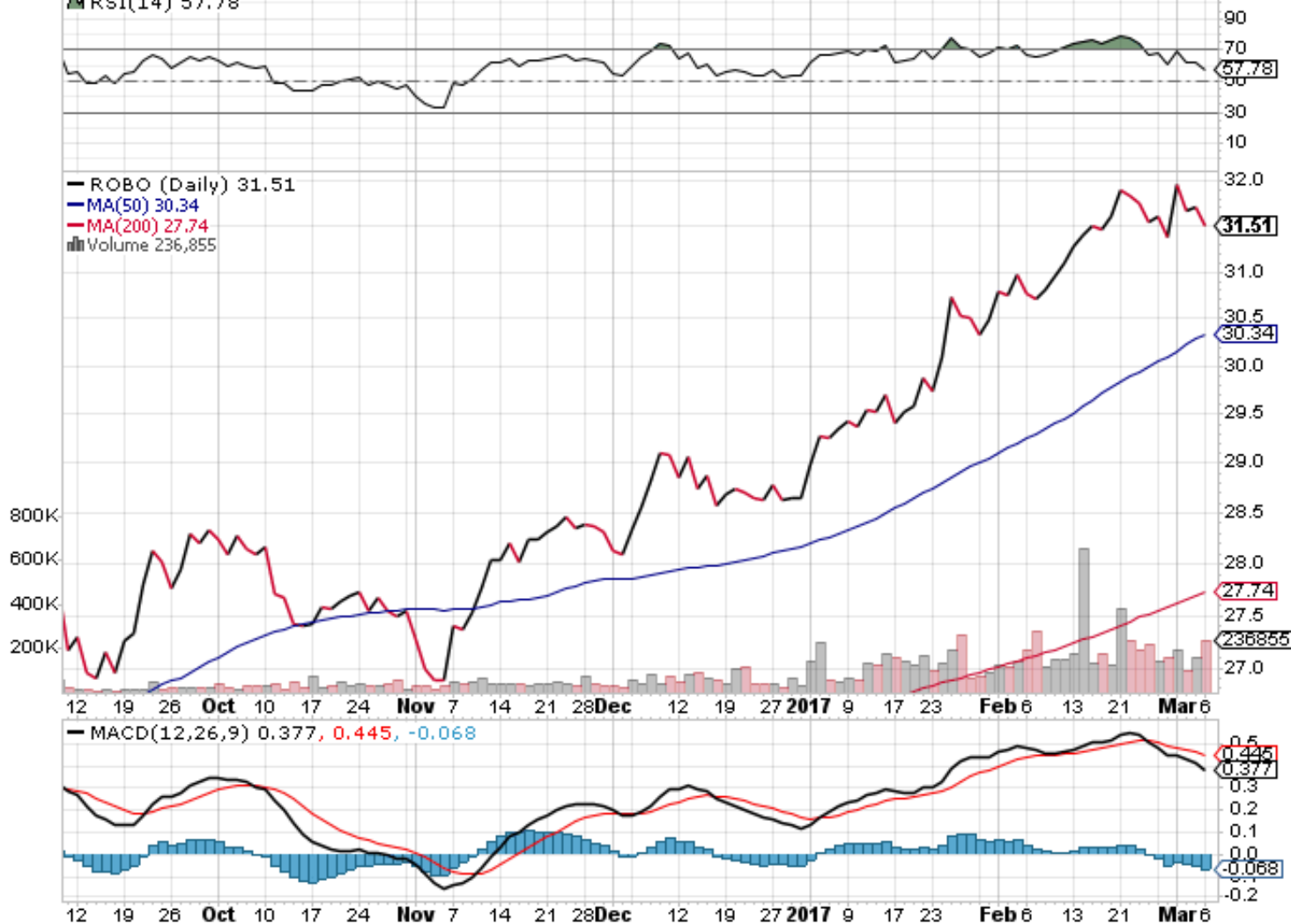
ROBO ROBO Global Robotics and Automation Index ETF Nasdaq GM + BATS

© StockCharts.com

6-Mar-2017 10:39 am

Open 31.72 **High** 31.72 **Low** 31.50 **Last** 31.51 **Volume** 236.9K **Chg** -0.19 (-0.60%) ▼

▲ RSI(14) 57.78



US Equities

(US) US DOMESTIC

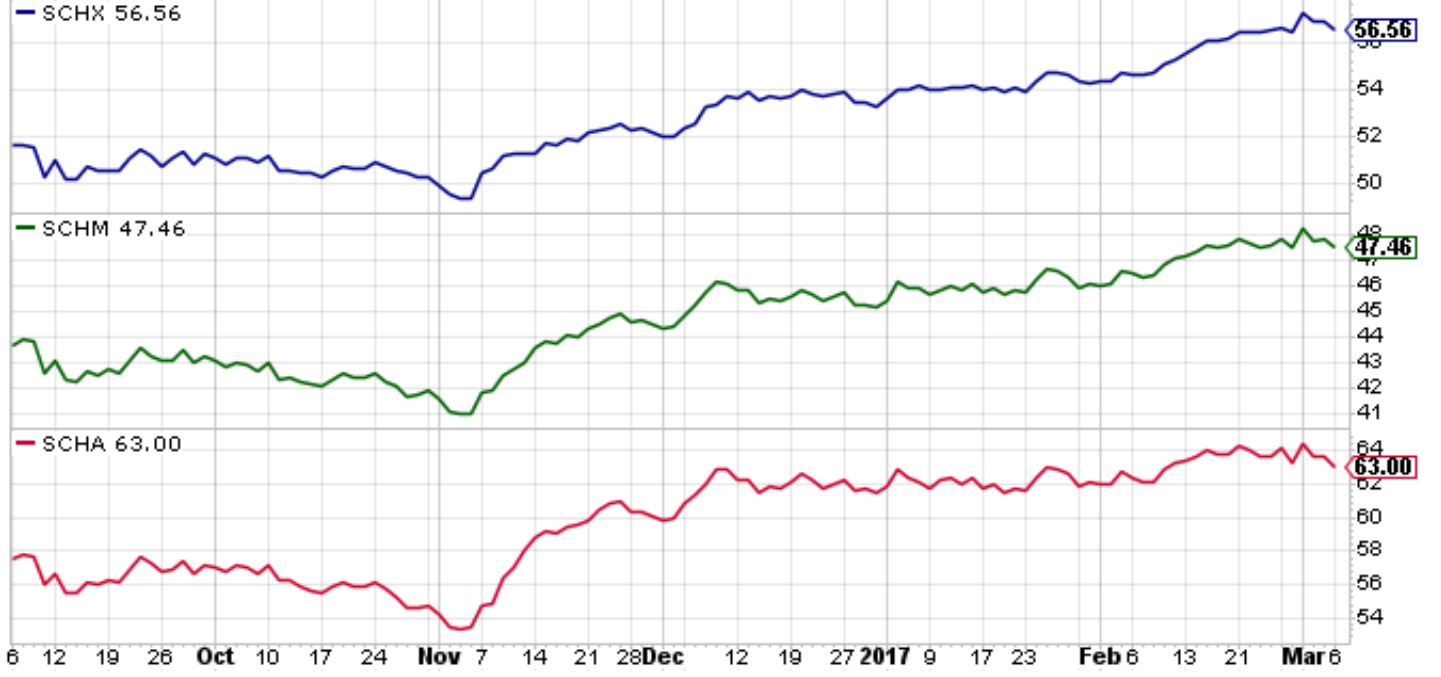
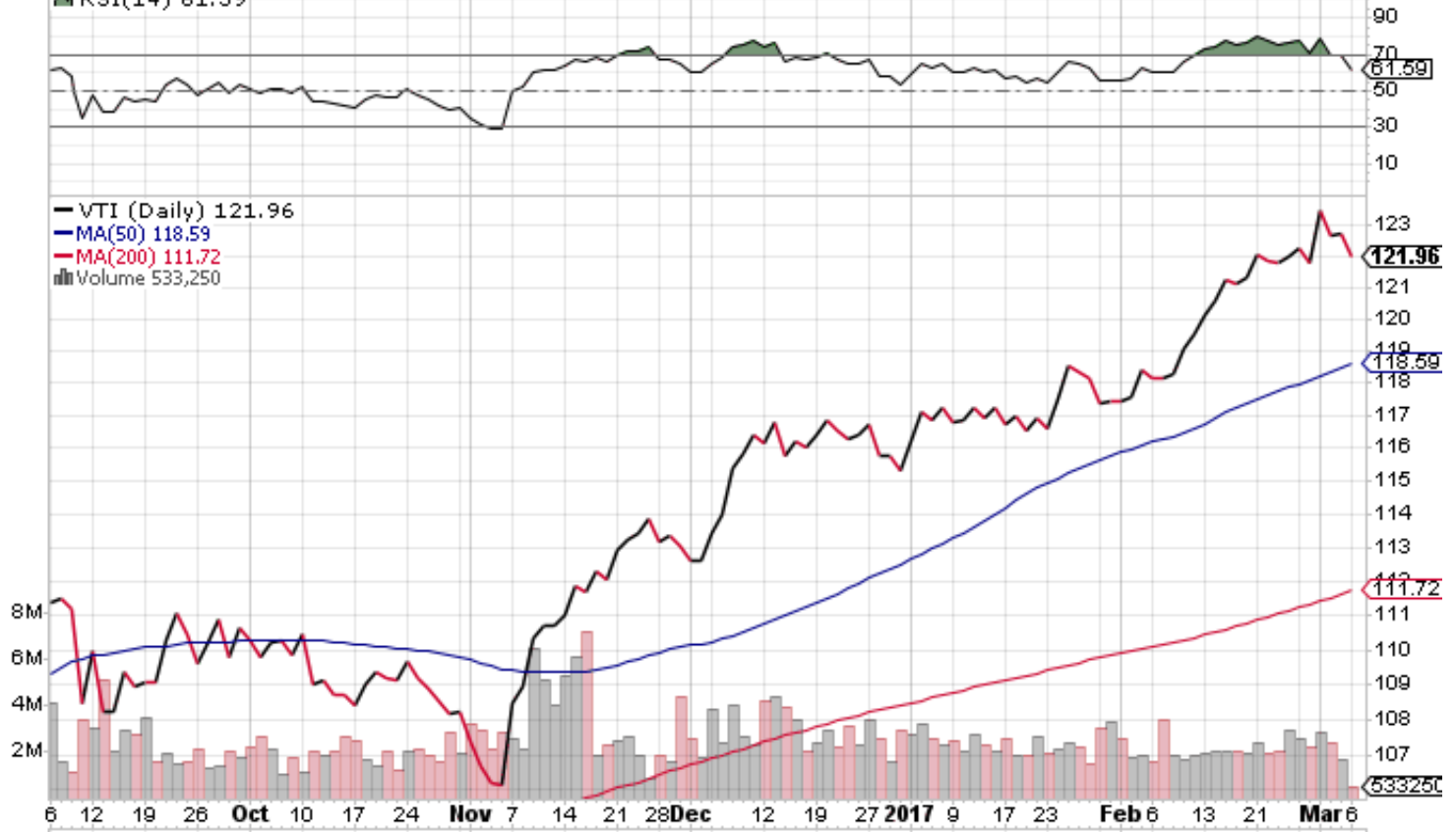
VTI Vanguard Total Stock Market ETF NYSE + BATS

© StockCharts.com

6-Mar-2017 10:39am

Open 122.48 High 122.48 Low 121.95 Last 121.96 Volume 533.2K Chg -0.79 (-0.64%)

▲ RSI(14) 61.59



US Equities (+) SCHWAB L-M-S

(US) US Home Builders

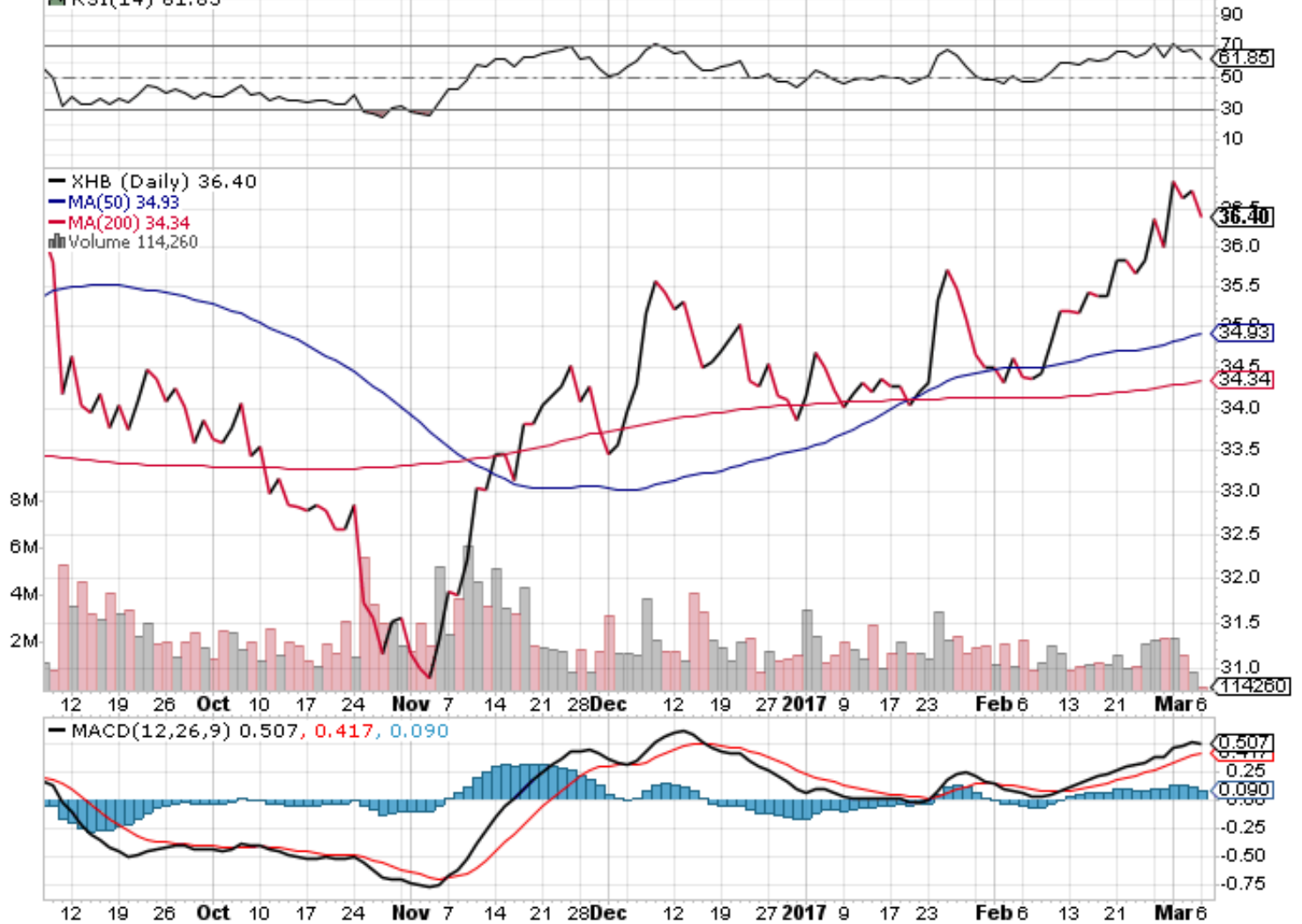
XHB SPDR S&P Homebuilders ETF NYSE + BATS

© StockCharts.com

6-Mar-2017 10:39am

Open 36.45 High 36.52 Low 36.18 Last 36.40 Volume 114.3K Chg -0.35 (-0.95%)

▲ RSI(14) 61.85



US Equities

(US) US Markets

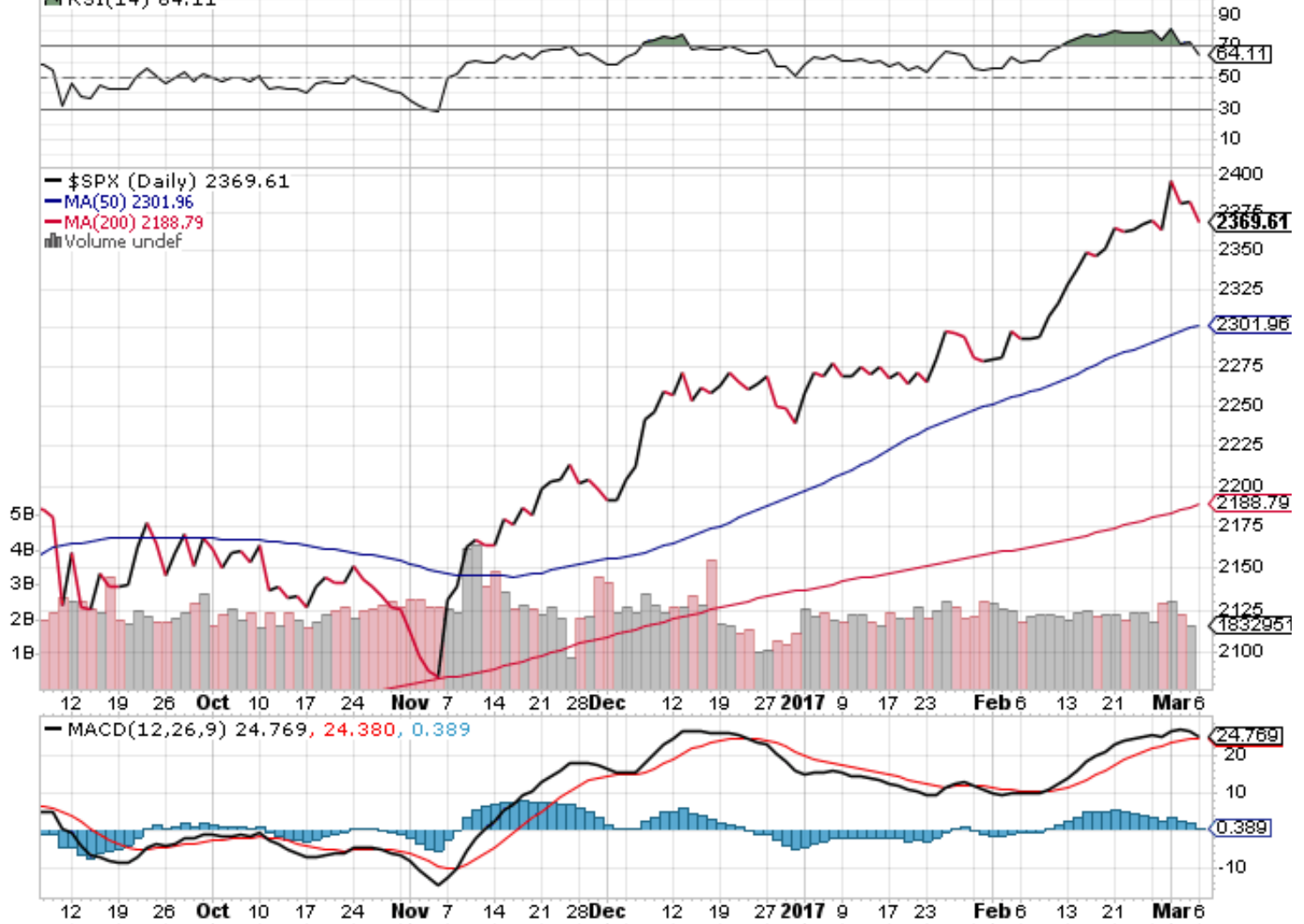
\$SPX S&P 500 Large Cap Index INDX

© StockCharts.com

6-Mar-2017 10:39am

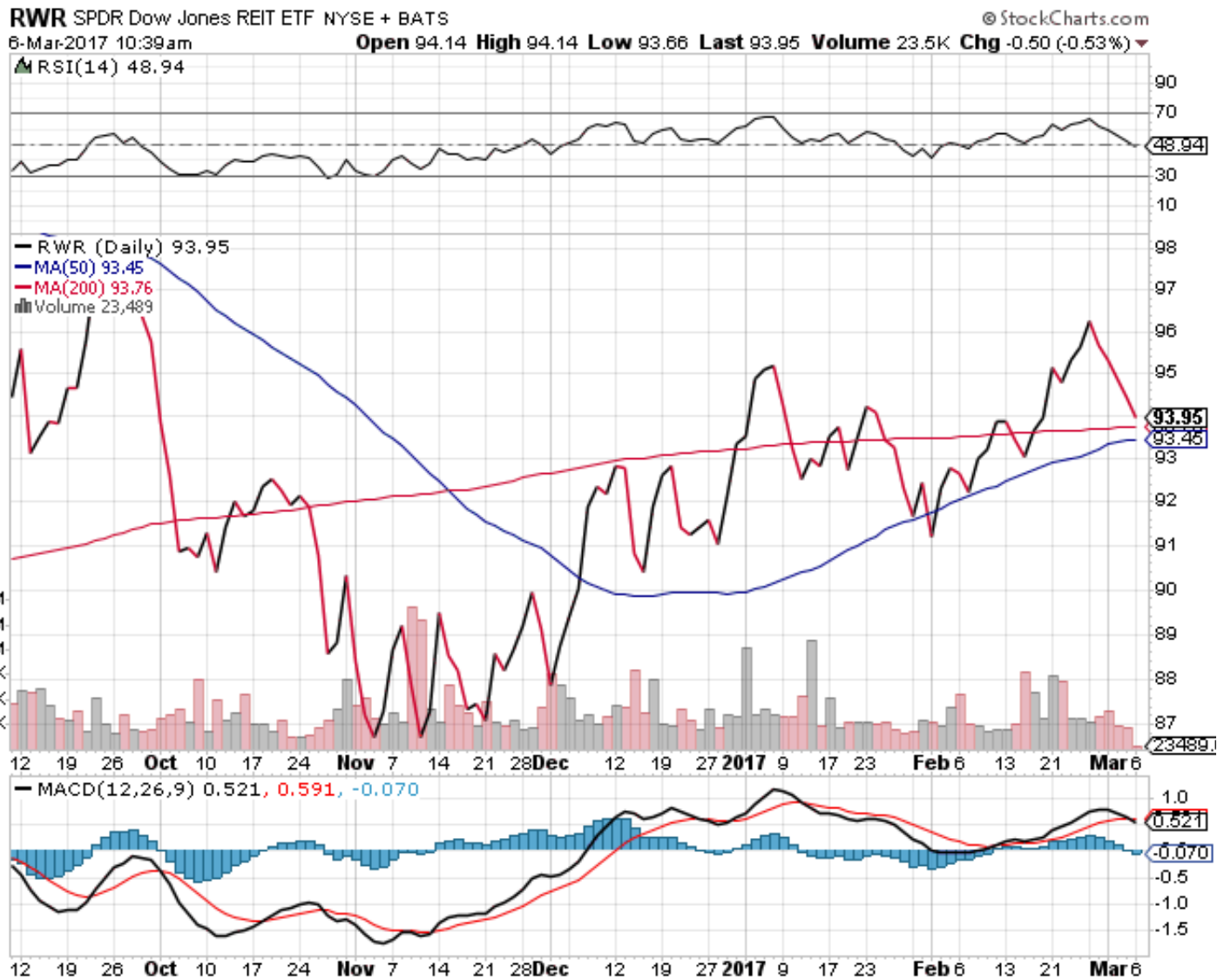
Open 2375.23 High 2375.23 Low 2368.28 Last 2369.61 Chg -13.51 (-0.57%)

▲ RSI(14) 64.11



US Equities

(US) US Real Estate



US Equities

(US) US Real Estate

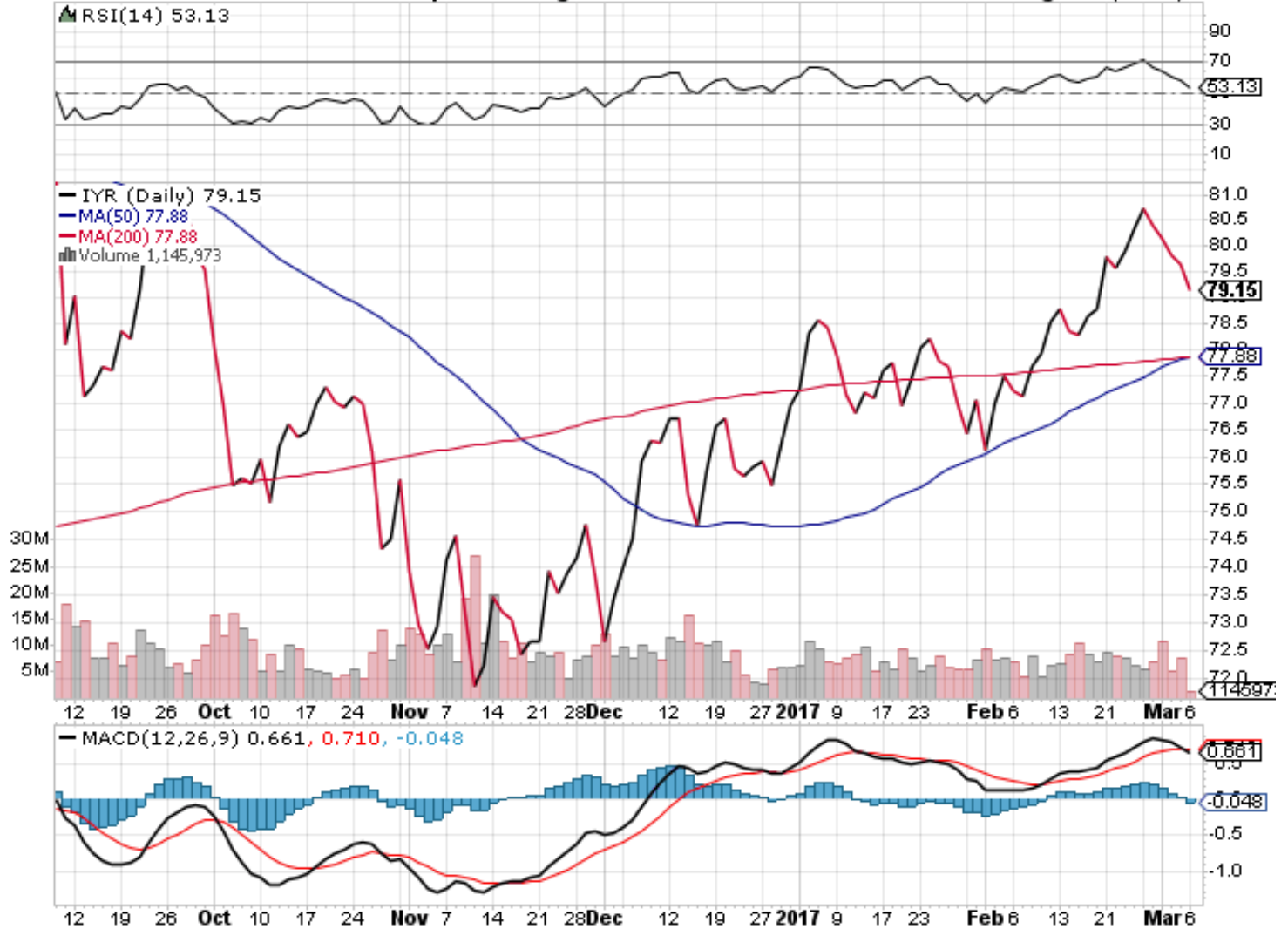
IYR iShares U.S. Real Estate ETF NYSE + BATS

© StockCharts.com

6-Mar-2017 10:39am

Open 79.40 High 79.59 Low 78.93 Last 79.15 Volume 1.1M Chg -0.49 (-0.62%)

▲ RSI(14) 53.13



US Equities

S&P 500 SPDRs ETF

SPY SPDR S&P 500 ETF NYSE + BATS

© StockCharts.com

6-Mar-2017 10:39am

Open 237.50 High 237.85 Low 237.04 Last 237.19 Volume 10.8M Chg -1.23 (-0.52%)

▲ RSI(14) 65.21

📊 SPY (Daily) 237.19
— MA(50) 229.90
— MA(200) 217.34
📊 Volume 10,775,457



US Equities

SPDR Barclays High Yield Bond ETF



US Dollar

UUP PowerShares DB US Dollar Index Bullish Fund NYSE + BATS

© StockCharts.com

6-Mar-2017 10:39am

Open 26.20 **High** 26.23 **Low** 26.20 **Last** 26.22 **Volume** 274.4K **Chg** +0.05 (+0.19%) ▲

▲ RSI(14) 54.46



Van Eck Gold Miners

GDV VanEck Vectors Gold Miners ETF NYSE + BATS

© StockCharts.com

6-Mar-2017 10:39am

Open 22.10 High 22.18 Low 21.79 Last 21.85 Volume 8.6M Chg -0.35 (-1.55%)

▲ RSI(14) 32.96



Precious Metals